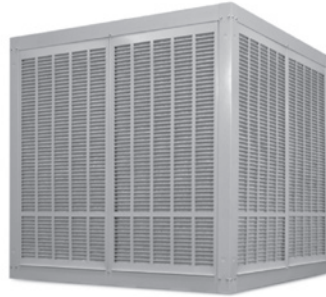
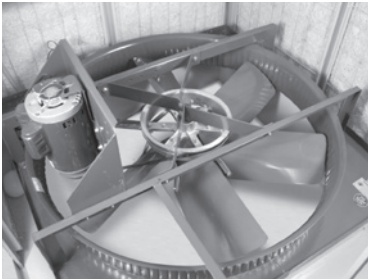


# Phoenix Manufacturing, Inc.

3655 E. Roeser Rd. • Phoenix, AZ 85040 • phoenixmanufacturing.com • 602-437-1034

## SPECIFICATION DATA INDUSTRIAL FRIGIING ASPEN FAN MODELS



MODELS:	CF2301	CF2312
	CF2302	CF2314
	CF2303	CF2322
	CF2315	CF2324

- Units are UL Listed to UL Standard 507
- High quality architectural grade Peblar XT® finish
- Galvanized sheet steel is zinc coated at weight rated G40 or G90
- Multi-layer bottom pan finish

- Up to 19,000 CFM capacity
- Three Phase EISA motors are NEMA MG-1 table 12-12 compliant
- Motor, belt, pumps & float included
- Bearings have an L10 bearing life of 39,600 hours

### PERFORMANCE

**AIR DELIVERY** - data published and derived from test conducted in accordance with A.M.C.A (Air Movement and Control Assoc.) standard 210.

**BEARING LIFE** - L10 bearing life of 39,600 hours is based on ABMA standard 9/ISO standard 281.

**MOTORS** - recognized under UL component standard #1004 for motor certification.

**SINGLE PHASE MOTORS** - tested under UL standard 507 for locked rotor and heat rise protection.

**THREE PHASE MOTORS** - EISA motors are NEMA MG-1 table 12-12 construction.

**PUMPS** - recognized under the UL standard #778 for operating water pumps with thermal overload and locked rotor protection.

### CONSTRUCTION

**EVAPORATIVE MEDIA - ASPEN PADS** - built to federal specification PP-E-911 for Type 1, Class A. Grade 4.

**SEALANT** - water immersion per ASTM D870.

**FLEXIBILITY** - per ASTM D756.

**HOT DIPPED GALVANIZED SHEET STEEL** - is ASTM A653, type CS, with zinc coating weights rated G40 or G90.

**CORROSION RESISTANCE** - per ASTM B117.

**POLYMERIC MATERIALS** - listed in accordance with UL 94 and 746C.

**PENCIL HARDNESS** - per ASTM D3363.

**IMPACT RESISTANCE** - per D2794.

**FLEXIBILITY** - per ASTM D522.

**SURFACE BURNING CHARACTERISTICS** - of building materials (best rating) per UL 723 and ASTM E-84.

**PEBLAR XT®** - is our one coat TGIC Polyester Powder Coating system that is applied over 5 stage zinc phosphate prepared sheet steel surfaces for protection against atmospheric corrosion. This coating system meets the requirement of UL 1332 - organic coatings for steel enclosures of outdoor use electrical equipment.



UL Listed when used in non-ducted, single discharge applications.



Phoenix Manufacturing certifies that the evaporative coolers shown are licensed to bear the AMCA seal. Cooler ratings are based on tests performed in accordance with AMCA publication 211 and comply with the requirements of the AMCA Certified Rating Program.

All data, specifications and detail contained in this publication are intended as a general guide for using PHOENIX MANUFACTURING, INC. products. These products should not be used in design or construction without an independent evaluation by a qualified engineer or architect to verify the suitability of a particular product for use in a specific application. PHOENIX MANUFACTURING, INC. assumes no liability for failure resulting from the use or misapplication of computation, detail drawings and specifications contained herein. This publication contains the latest information available at the time of printing. PHOENIX MANUFACTURING, INC. reserves the right to make modifications and/or change materials of any of their products without prior notice or obligation. PHOENIX MANUFACTURING, INC. may not produce all of the products contained in this submittal. For product availability and the latest information regarding products contact PHOENIX MANUFACTURING, INC.

# SPECIFICATION DATA

## INDUSTRIAL FRIGIKING ASPEN FAN MODELS

### Frigiking Industrial Evaporative FAN Coolers Feature:

- Motor, belt, pump & float included.
- Knockout for electrical service is 7/8".
- Bottom pan drain is 3/4" male hose thread

### Electrical Data and Certified Air Delivery

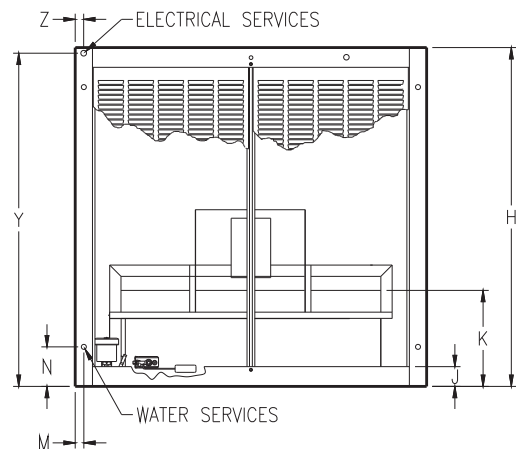
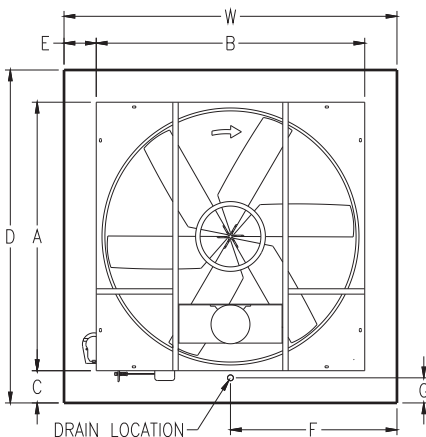
Model Number	Motor Specifications						Pump Voltage/ Amperage	Static Pressure (Inches Water) And AMCA Certified Air Flow (CFM)			
	Nameplate HP	BHP	Fan RPM	Voltage	Amperage	Phase		0.0"	0.1"	0.2"	0.3"
CF2301	1.0	1.15	458	120	13.2	1	120 / 1.7	16,100	14,200	11,000	7,300
CF2302	1.0	1.15	458	240	6.6	1	120 / 1.7				
CF2304	1.0	1.15	458	208-240 / 480	3.2-3.1 / 1.6	3	120 / 1.7				
CF2315	1.5	1.62	525	120	15.1	1	120 / 1.7	18,500	16,900	14,800	10,200
CF2312	1.5	1.62	525	240	7.6	1	120 / 1.7				
CF2314	1.5	1.62	525	208-240 / 480	4.6-4.8 / 2.4	3	120 / 1.7				
CF2322	2	2.2	579	240	8.5	1	120 / 1.7		19,000	17,200	14,800
CF2324	2	2.2	579	208-240 / 480	6.0-5.8 / 2.9	3	120 / 1.7				

- Performance certified is for installation type B: free inlet, ducted outlet.
- Performance ratings include the effect of evaporative media.
- Power (BHP) includes transmission losses.

1. All external wiring and components such as disconnects, motor starters, and over-current protection are to be field supplied and are not included as part of the evaporative cooler from the factory.
2. A separate 120 volt, 60 hertz, single phase, GFCI protected pump circuit is required to maintain the UL Listing of the evaporative cooler. Pump capacity shown is total for 2 pumps per evaporative cooler.



Phoenix Manufacturing, Inc. certifies that the evaporative coolers shown are licensed to bear the AMCA seal. The ratings shown are based on tests and procedures performed in accordance with AMCA publication 211 and comply with the requirements of the AMCA Certified Ratings Program.



### Engineering Data

Cabinet Dimensions			Discharge Dimensions				Drain Location		Bottom Pan		Water Service		Electrical Service		Pad Frame			Pad Filler Dimensions		Approx. Weight	
			Opening		Position				Depth	Riser											
H	W	D	A	B	C	E	F	G	J	K	M	N	Y	Z	HT	WIDTH	QTY	HT.	WIDTH	SHIP	OPER.
60	62	62	46	46	8	8	31	4 2/3	3 1/2	17	1 1/2	7	59	1 1/2	54 1/3	27 1/2	8	54	28	560	800

**WARNING:** This product can expose you to chemicals including Lead, which is known to the State of California to cause cancer and birth defects or other reproductive harm. For more information go to [www.P65Warnings.ca.gov](http://www.P65Warnings.ca.gov)

Project: \_\_\_\_\_

Location: \_\_\_\_\_

Architect: \_\_\_\_\_

Engineer: \_\_\_\_\_

Contractor: \_\_\_\_\_

Submitted by: \_\_\_\_\_

Date: \_\_\_\_\_

Ref. No.	Cooler Model No.	Quantity	CFM	Static Pressure	HP	Volts	Phase
1							
2							
3							
4							
5							
6							
7							
8							
9							
10							

Notes: \_\_\_\_\_

\_\_\_\_\_

\_\_\_\_\_

\_\_\_\_\_

\_\_\_\_\_

\_\_\_\_\_

All data, specifications and detail contained in this publication are intended as a general guide for using PHOENIX MANUFACTURING, INC. products. These products should not be used in design or construction without an independent evaluation by a qualified engineer or architect to verify the suitability of a particular product for use in a specific application. PHOENIX MANUFACTURING, INC. assumes no liability for failure resulting from the use or misapplication of computation, detail drawings and specifications contained herein. This publication contains the latest information available at the time of printing. PHOENIX MANUFACTURING, INC. reserves the right to make modifications and/or change materials of any of their products without prior notice or obligation. PHOENIX MANUFACTURING, INC. may not produce all of the products contained in this submittal. For product availability and the latest information regarding products contact PHOENIX MANUFACTURING, INC.