



2024

RESIDENTIAL



EVAPORATIVE AIR COOLERS

8" / 12" / 4 X 4 RIGID MEDIA MODELS PROVIDE RELIABLE AND EFFICIENT EVAPORATIVE AIR COOLING FOR YOUR HOME

Phoenix Manufacturing Inc.

3655 E. Roeser Rd. Phoenix, AZ 85040

Phone: 602-437-1034

E-mail: pmisales@phxmfg.com

www.phoenixmanufacturing.com

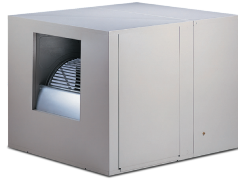


AEROCOOL® RELIABILITY & COMFORT

Utilizing a single inlet design, AeroCool provides the ultimate protection available for the longevity of your cooler. The all-metal construction of the wet module is protected from the damaging effects of typical deposits found in most water systems. High efficiency evaporative cooling, low maintenance, and a long life of AeroCool makes these coolers an award winner. Responding to your specific requirements, these units are available in three models: down, side, and up discharge for concealed ground level applications.



DOWN DRAFT
TD MODEL



SIDE DRAFT
TH MODEL



UP DRAFT
TUP MODEL

CHOOSING THE RIGHT MODEL TO MEET YOUR NEEDS

Choosing the right AeroCool Series model is important for proper operation. All AeroCool air coolers use efficient Rigid Media and are available in three levels of cooling efficiency.

AeroCool Series coolers are designed to operate at maximum efficiency with minimal maintenance. The rigid media gives the ability to deliver colder air while reducing the time spent replacing standard aspen media.

For maximum performance, choose the model with the proper rating and motor as well as the correct duct configuration. Ask your qualified contractor to help you choose the correct AeroCool model that best fits your home and your needs.

FACTORY INSTALLED ACCESORIES / OPTIONS

RELIABLE LOW SUMP PUMP

The most powerful pump on the market today.

FLOMATE

Quality water distribution system.

EASY ACCESS, GRAVITY HELD DOORS

Easy to remove access doors reduce maintenance time.

8" STANDARD RIGID MEDIA

The 8" media is a good economical choice for high efficiency cooling. It provides increased cooling performance over traditional aspen media pads and has 80% saturation efficiency.

12" STANDARD RIGID MEDIA

The ultra-efficient 12" media is the best choice where maximum cooling efficiency is required. This media provides 89% saturation efficiency.

LOW VOLTAGE THERMOSTAT

NDS digital thermostat.

PROGAMMABLE DRAIN PUMP

Extends pad life. Easy plug-in installation.

WINTERIZING PANEL

Prohibits outward heat loss and cold air from entering your house during the off-season.

RELIABLE MOTOR *

High-torque, belt drive motors are recognized by Underwriters Laboratories (U.L. Listed) . **Industry best - 3 year warranty (if provided by PMI)**

UL LISTED GREENHOUSE MODELS ALSO AVAILABLE *

When specifying or ordering U.L. Listed models, add a "U" to the prefix to the appropriate model number. For greenhouse models that are providing air into a space with little to no ductwork, remove the "T" prefix, add a "G" then delete the "C" suffix for both models. In order to maintain the U.L. Listed designation, these models must be used in conjunction with PMI supplied motor kits and pumps. **U.L. LISTED EXAMPLE: UTD6801. GREENHOUSE EXAMPLE: GH6801**

* Motor kits sold separately. In order to maintain U.L. Classified or Listed designation, these models must be used in conjunction with PMI supplied motor kits and pumps.

AEROCOOL[®] PRO SERIES



PD/PH

PERFORMANCE & CONVENIENCE

The AeroCool Pro Series evaporative air cooler, with its integrated systems, works hard to help maintain performance and efficiency while allowing you more time to - Live Your Life in Comfort.

The AeroCool Pro Series features the Pro-4 x 4 high efficiency media to provide the coolest air possible, employing the Pro-Clean System to maintain the entire system.

The Pro-Clean System maintains the cleanliness of your evaporative cooler by automatically draining the cooler and refilling with fresh, clean water, thus avoiding scale build-up.

The AeroCool Pro Series includes the Pro-Shield weatherizing panel for use in the off-season to prevent heat loss and unwanted air from entering the home during colder months. Defending the media from the elements of winter can also extend the life of your unit.

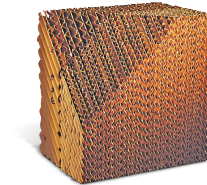
Set the comfort level for you and your family and the AeroCool Pro Series evaporative air cooler does the rest. Combined with the Pro-Stat programmable thermostat, the AeroCool Pro Series will automatically and efficiently operate the equipment to best maintain your comfort level while using the least amount of energy.

FACTORY INSTALLED

AeroCool Pro series includes all of the standard AeroCool features plus the following:

UPGRADED PRO SERIES 4 X 4 HI-EFFICIENCY MEDIA

Because this blend of media has a 93% saturation efficiency, our 4 x 4 Pro Series coolers can deliver colder air than any other home comfort evaporative cooler.



PRO-CLEAN SYSTEM

Drains and washes the unit daily and can save 1,000's of gallons of water over the cooling season as compared to a standard bleed-off system.

PRO SERIES FACTORY INSTALLED 2 SPEED MOTOR

All components are completely pre-wired by the factory, thus reducing installation time and increasing reliability.

PRO THERMOSTAT II

The cooler's "brain" saves money by giving just the right amount of cool all the time. The "Softspeed Transition" feature creates smoother operation when the motor automatically changes speed.

- Backlit display panel
- 12 / 24 hour time of day / month / year clock
- Fully programmable
- 24 / 7
- 4 events per day



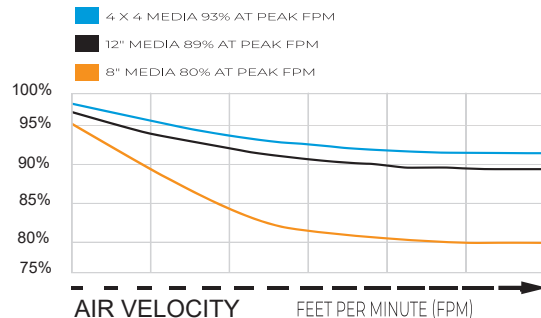
PRO-SHIELD

The weatherizing panel prohibits outward heat loss and cold air from entering into your home during the off-season. Easy to install, media protection is also afforded, increasing the life of the unit.

AEROCOOL FEATURES COMPARISON

| | AEROCOOL SERIES | PRO SERIES |
|--|-----------------|------------|
| ❖ Reliable low sump pump | • | • |
| ❖ Flomate water distribution | • | • |
| ❖ System Easy access | • | • |
| ❖ Gravity held doors Peblar XT protection | • | • |
| ❖ Pro-Shield winterizing panel | Optional | • |
| ❖ 8" & 12" standard rigid media | • | |
| ❖ 4 x4 hi-efficiency media | | • |
| ❖ Pro-Clean system | | • |
| ❖ Factory installed motor W/ 3 year warranty | | • |
| ❖ Pro Thermostat | | • |
| ❖ New Control Board Access Panel | | • |

COOLING EFFICIENCY



SPECIFICATIONS:

AEROCOOL SERIES All AeroCool Models are UL Classified, include 120 V pump. Motors sold separately *

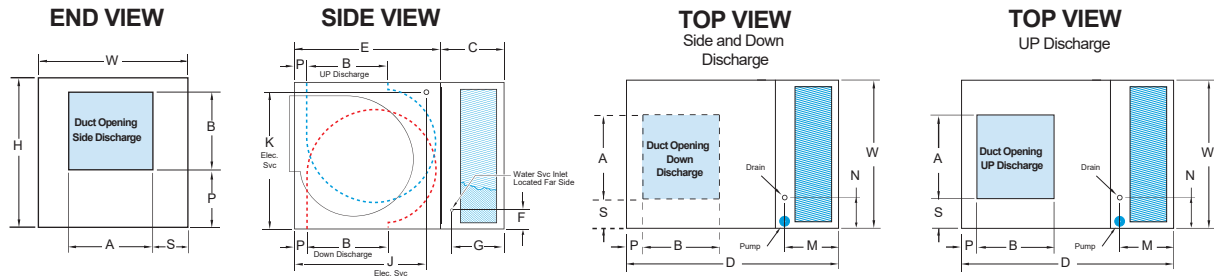
| MEDIA TYPE | MODEL NUMBER TH or PH = SIDE DISCHARGE TD or PD = DOWN DISCHARGE TUP = UP DISCHARGE | INDUSTRY STANDARD RATING * | AIR DELIVERY CFM (CUBIC FEET PER MINUTE) | | | | | | ELECTRICAL SPECIFICATIONS | | | |
|------------|--|----------------------------|--|------|------|------|------|------|---------------------------|-------|-----------|------------|
| | | | 0.0" | 0.1" | 0.2" | 0.3" | 0.4" | 0.5" | HP | SPEED | VOLTS | AMPS |
| 8" MEDIA | TD / TH 3801C | 3800 | 2021 | 1939 | 1879 | 1711 | 1509 | 1203 | 1/3 | 2 | 120 | 7.4 |
| | TD / TH 4801C | 4400 | 3329 | 3035 | 2816 | 2623 | 2429 | 2235 | 1/2 | 2 | 120 / 240 | 9.0 / 5.3 |
| | TD / TH 4801C | 4800 | 3875 | 3619 | 3440 | 3286 | 3132 | 2978 | 3/4 | 2 | 120 / 240 | 11.5 / 6.0 |
| | TD / TH / TUP 6801C | 5800 | 4250 | 4125 | 4000 | 3850 | 3650 | 3425 | 3/4 | 2 | 120 / 240 | 11.5 / 6.0 |
| | TD / TH / TUP 6801C | 6800 | 4750 | 4600 | 4475 | 4375 | 4250 | 4050 | 1 | 2 | 120 / 240 | 13.3 / 6.9 |
| 12" MEDIA | TD / TH 4812C | 4400 | 2860 | 2790 | 2645 | 2350 | 2030 | 1890 | 1/2 | 2 | 120 / 240 | 9.9 / 5.9 |
| | TD / TH 4812C | 4800 | 3270 | 3220 | 3190 | 2940 | 2650 | 2350 | 3/4 | 2 | 120 / 240 | 12.4 / 6.6 |
| | TD / TH / TUP 6812C | 5800 | 4130 | 4000 | 3820 | 3630 | 3375 | 2740 | 3/4 | 2 | 120 / 240 | 12.4 / 6.6 |
| | TD / TH / TUP 6812C | 6800 | 4551 | 4440 | 4300 | 4080 | 3940 | 3680 | 1 | 2 | 120 / 240 | 14.2 / 7.6 |

* In order to maintain UL Classified or UL Listed designation, these models must be used in conjunction with PMI supplied motor kits and pumps.

AEROCOOL PRO SERIES All AeroCool Pro Models are UL Classified, include installed 120 V motor and pumps, ProStat thermostat and controls.

| | | | | | | | | | | | | |
|-------------|---------------|------|------|------|------|------|------|------|-----|---|-----|------|
| 4 x 4 MEDIA | PD / PH 4803C | 4800 | 3450 | 3200 | 3050 | 2950 | 2500 | 2310 | 3/4 | 2 | 120 | 11.9 |
| | PD / PH 6803C | 6800 | 4430 | 4310 | 4135 | 3990 | 3695 | 3460 | 1 | 2 | 120 | 14.2 |

* Industry Standard Rating - represents a numeric index for use in comparing units of different manufacturers.



| MEDIA TYPE | MODEL NUMBER | CABINET | | | DUCT OPENING | | | | WATER SVC Location | | ELEC SVC Location | | DRAIN Location | | BLOWER WHEEL | | SHAFT Dia | BELT LENGTH | PULLEY Dia | SHIP WT | OPER WT | | |
|------------|--------------|---------|----|----|--------------|--------|----|----|--------------------|--------|-------------------|--------|----------------|-------|--------------|--------|-----------|-------------|------------|---------|---------|-------------|-----|
| | | H | W | D | A | B | C | E | F | G | J | K | M | N | P | S | | | | | | DIA x WIDTH | |
| 8" MEDIA | TD3801C | 25 3/4 | 33 | 43 | 16 | 16 | 17 | 26 | 4 3/8 | 13 1/2 | 22 3/4 | 22 3/4 | 13 1/2 | 5 1/2 | 1 1/2 | 8 1/2 | 13 | 13 | 1 | 46 | 8 | 115 | 130 |
| | TH3801C | 25 3/4 | 33 | 43 | 16 | 16 | 17 | 26 | 4 3/8 | 13 1/2 | 22 3/4 | 22 3/4 | 13 1/2 | 5 1/2 | 1 1/2 | 8 1/2 | 13 | 13 | 1 | 46 | 8 | 115 | 130 |
| | TD4801C | 27 1/4 | 42 | 43 | 17 3/4 | 17 3/4 | 17 | 26 | 5 1/2 | 13 1/2 | 23 1/2 | 24 3/8 | 13 1/4 | 13 | 1 1/2 | 12 1/8 | 16 | 16 | 1 | 54 | 10 | 161 | 189 |
| | TH4801C | 27 1/4 | 42 | 43 | 17 3/4 | 17 3/4 | 17 | 26 | 5 1/2 | 13 1/2 | 23 1/2 | 24 3/8 | 13 1/4 | 13 | 8 | 12 1/8 | 16 | 16 | 1 | 55 | 10 | 161 | 189 |
| | TD6801C | 34 1/4 | 42 | 45 | 19 3/4 | 19 3/4 | 17 | 28 | 5 1/2 | 13 1/2 | 25 1/2 | 31 3/8 | 13 1/4 | 13 | 1 1/2 | 11 1/8 | 19 | 18 | 1 | 62 | 12 | 198 | 220 |
| | TH6801C | 34 1/4 | 42 | 45 | 19 3/4 | 19 3/4 | 17 | 28 | 5 1/2 | 13 1/2 | 25 1/2 | 31 3/8 | 13 1/4 | 13 | 11 1/2 | 11 1/8 | 19 | 18 | 1 | 65 | 12 | 198 | 220 |
| 12" MEDIA | TUP6801C | 34 1/4 | 42 | 45 | 19 3/4 | 19 3/4 | 17 | 28 | 5 1/2 | 13 1/2 | 25 1/2 | 31 3/8 | 13 1/4 | 13 | 1 1/2 | 11 1/8 | 19 | 18 | 1 | 65 | 12 | 198 | 220 |
| 12" MEDIA | TD4812C | 27 1/4 | 42 | 47 | 17 3/4 | 17 3/4 | 21 | 26 | 5 1/2 | 17 1/2 | 23 1/2 | 24 3/8 | 17 1/4 | 13 | 1 1/2 | 12 1/8 | 19 | 18 | 1 | 54 | 10 | 177 | 212 |
| | TH4812C | 27 1/4 | 42 | 47 | 17 3/4 | 17 3/4 | 21 | 26 | 5 1/2 | 17 1/2 | 23 1/2 | 24 3/8 | 17 1/4 | 13 | 8 | 12 1/8 | 19 | 18 | 1 | 55 | 10 | 177 | 212 |
| | TD6812C | 34 1/4 | 42 | 49 | 19 3/4 | 19 3/4 | 21 | 28 | 5 1/2 | 17 1/2 | 25 1/2 | 31 3/8 | 17 1/4 | 13 | 1 1/2 | 11 1/8 | 19 | 18 | 1 | 62 | 12 | 214 | 257 |
| | TH6812C | 34 1/4 | 42 | 49 | 19 3/4 | 19 3/4 | 21 | 28 | 5 1/2 | 17 1/2 | 25 1/2 | 31 3/8 | 17 1/4 | 13 | 11 1/2 | 11 1/8 | 19 | 18 | 1 | 65 | 12 | 214 | 257 |
| | TUP6812C | 34 1/4 | 42 | 49 | 19 3/4 | 19 3/4 | 21 | 28 | 5 1/2 | 17 1/2 | 25 1/2 | 31 3/8 | 17 1/4 | 13 | 1 1/2 | 11 1/8 | 19 | 18 | 1 | 65 | 12 | 214 | 257 |
| 4x4 MEDIA | PD4803C | 27 1/4 | 42 | 43 | 17 3/4 | 17 3/4 | 17 | 26 | 5 1/2 | 13 1/2 | 23 1/2 | 24 3/8 | 13 1/4 | 13 | 1 1/2 | 12 1/8 | 16 | 16 | 1 | 54 | 10 | 177 | 195 |
| | PH4803C | 27 1/4 | 42 | 43 | 17 3/4 | 17 3/4 | 17 | 26 | 5 1/2 | 13 1/2 | 23 1/2 | 24 3/8 | 13 1/4 | 13 | 8 | 12 1/8 | 16 | 16 | 1 | 55 | 10 | 177 | 195 |
| | PD6803C | 34 1/4 | 42 | 45 | 19 3/4 | 19 3/4 | 17 | 28 | 5 1/2 | 13 1/2 | 25 1/2 | 31 3/8 | 13 1/4 | 13 | 1 1/2 | 11 1/8 | 19 | 18 | 1 | 62 | 12 | 217 | 232 |
| | PH6803C | 34 1/4 | 42 | 45 | 19 3/4 | 19 3/4 | 17 | 28 | 5 1/2 | 13 1/2 | 25 1/2 | 31 3/8 | 13 1/4 | 13 | 11 1/2 | 11 1/8 | 19 | 18 | 1 | 65 | 12 | 217 | 232 |

AEROCOOL EVAPORATIVE COOLERS and components are designed and tested in accordance with one or more of the following standards or agencies. **AIR DELIVERY** - data published derived from tests conducted in accordance with Air Movement and Control Assoc. standard 210. **EVAPORATIVE MEDIA** - Specially Corrugated Cellulose Materials, impregnated with insoluble anti-rot salts and rigidifying saturants. **4. SEALANT** - water immersion per ASTM D870. **FLEXIBILITY** - per ASTM D756. **CORROSION RESISTANCE** - per ASTM B117. **PENCIL HARDNESS** - per ASTM D3363. **IMPACT RESISTANCE** - per D2794. **FLEXIBILITY** - per ASTM D522. **SPECULAR GLOSS** - per ASTM 523. **SURFACE BURNING CHARACTERISTICS** - of building materials (best rating) per UL 723 and ASTM E-84. **PUMPS** recognized under UL 778 and UL 507 for operating water pumps with thermal overload and locked rotor protection. **POLYMERIC MATERIALS** listed in accordance with UL 94 and 746C. **MOTORS** recognized under UL component standard #1004 for motor construction. **MOTORS** tested under UL 507 for locked rotor and heat rise protection.

Phoenix Manufacturing, Inc. produces this equipment, with pride and craftsmanship, in the U.S.A. As a leader in our country's evaporative cooler industry, we continuously strive to offer product improvements and reserve the right to change specifications and designs without notice.

UL LISTED GREENHOUSE MODELS ALSO AVAILABLE When specifying or ordering U.L. Listed models, add a "U" to the prefix to the appropriate model number. For greenhouse models that are providing air into a space with little to no ductwork, remove the "T" prefix, add a "G" then delete the "C" suffix for both models. In order to maintain the U.L. Listed designation, these models must be used in conjunction with PMI supplied motor kits and pumps. U.L. LISTED EXAMPLE: **UTD6801**. GREENHOUSE EXAMPLE: **GH6801**



WARNING: This product can expose you to chemicals including Lead, which is known to the State of California to cause cancer and birth defects or other reproductive harm. For more information go to www.P65Warnings.ca.gov



DESIGNED & ASSEMBLED IN THE USA SINCE 1975