

Phoenix Manufacturing, Inc.

3655 E. Roeser Rd. • Phoenix, AZ 85040 • evapcool.com • 602-437-1034

SPECIFICATION DATA

INDUSTRIAL EVAPORATIVE FAN COOLER

MODELS: RF4833 & RF4834 (UL listed)



FEATURES:

- Units are UL Listed to UL Standard 507
- High quality architectural grade Peblar XT® finish
- Galvanized sheet steel is zinc coated at weight rated G40 or G90
- Up to 22,600 CFM capacity
- Three Phase EISA motors are NEMA MG-1 table 12-12 compliant
- Motor, belt, pump & float included
- Bearings have an L10 bearing life of 39,600 hours
- Multi-layer bottom pan finish

PERFORMANCE

AIR DELIVERY - data published derived from tests conducted in accordance with A.M.C.A. (Air Movement and Control Assoc.) standard 210.

BEARING LIFE - L10 bearing life of 39,600 hours is based on ABMA standard 9/ISO standard 281.

MOTORS - recognized under UL component standard #1004 for motor certification.

THREE PHASE MOTORS - EISA motors are NEMA MG-1 table 12-12 construction.

PUMPS - recognized under the UL standard #778 for operating water pumps with thermal overload and locked rotor protection.

CONSTRUCTION

EVAPORATIVE MEDIA - specifically corrugated cellulose material, impregnated with insoluble anti-rot salts and rigidifying saturates.

SEALANT - water immersion per ASTM D870.

FLEXIBILITY - per ASTM D756.

HOT DIPPED GALVANIZED SHEET STEEL - is ASTM A653, type CS, with zinc coating weights rated G40 or G90.

CORROSION RESISTANCE - per ASTM B117.

POLYMERIC MATERIALS - listed in accordance with UL 94 and 746C.

PENCIL HARDNESS - per ASTM D3363.

IMPACT RESISTANCE - per D2794.

FLEXIBILITY - per ASTM D522

SPECULAR GLOSS - per ASTM D523.

SURFACE BURNING CHARACTERISTICS - of building materials (best rating) per UL 723 and ASTM E-84.

PEBLAR XT® - is our one coat TGIC Polyester Powder Coating system that is applied over 5 stage zinc phosphate prepared sheet steel surfaces for protection against atmospheric corrosion. This coating system meets the requirements of UL 1332 - organic coatings for steel enclosures of outdoor use electrical equipment.



LISTED
UL Listed when used in
non-ducted, single discharge
applications as shown.



All data, specifications and detail contained in this publication are intended as a general guide for using PHOENIX MANUFACTURING, INC. products. These products should not be used in design or construction without an independent evaluation by a qualified engineer or architect to verify the suitability of a particular product for use in a specific application. PHOENIX MANUFACTURING, INC. assumes no liability for failure resulting from the use or misapplication of computation, detail drawings and specifications contained herein. This publication contains the latest information available at the time of printing. PHOENIX MANUFACTURING, INC. reserves the right to make modifications and/or change materials of any of their products without prior notice or obligation. PHOENIX MANUFACTURING, INC. may not produce all of the products contained in this submittal. For product availability and the latest information regarding products contact PHOENIX MANUFACTURING, INC.

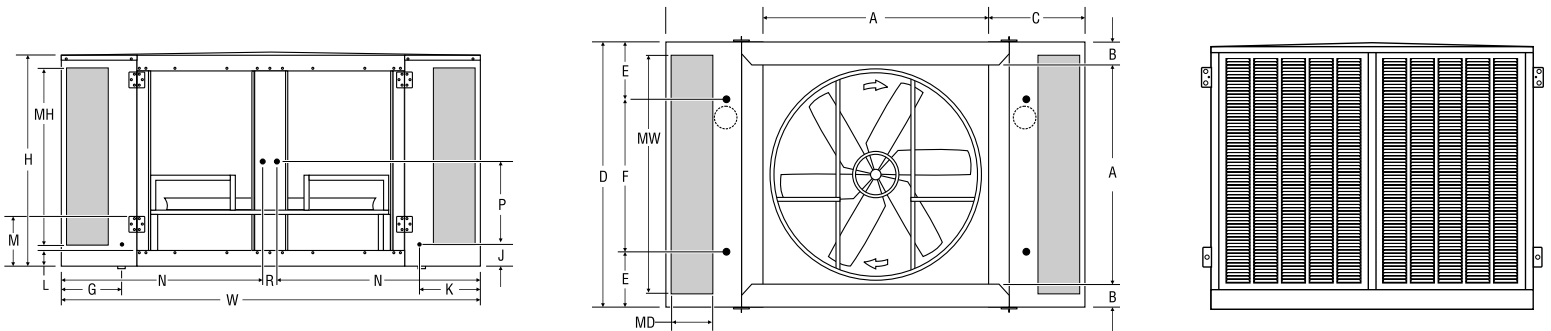
Date:

Project: _____ Location: _____

Architect: _____ Engineer: _____

Contractor: _____ Submitted by: _____

Notes: _____



Pump Specifications

Pump Model	Volts	AMPS	Watts	GPM @ 5' Head
PK60LA	120	1.7	105	7.3

Performance shown is installation Type B - Free Inlet, duct outlet. Power Rating (B.H.P.) includes transmission losses. Performance ratings include the effects of evaporative media in the airstream.

Engineering Data

Model	Fan Dimensions O.D.	Media Dimensions			Cabinet Dimensions			Discharge Dimensions			Drain Location Male Hose Thread			Water Service Opening is 1/4" I.D.		Bottom Pan		Electrical Service access is 7/8" I.D.			Approximate Weight	
		MH	MW	MD	H	W	D	A	B	C	E	F	G	J	K	Depth	Riser	N	P	R	Ship	Oper.
RF48	48	44-1/2	60	8	49	96	62	52	5	22	13	36	13-1/2	5	13-1/2	3-1/2	12	46-3/8	26-1/2	3-1/4	800	895

Electrical Data & Airflow

Model	Motor Specifications					Pump Volts/Amps	Motor Amps	Air Flow (CFM) @ Specified Static Pressure (inches of water)			
	HP	BHP	Fan RPM	Voltage	Phase			0.0"	0.1"	0.2"	.25"
RF4833A	3	3.33	578	240	3	120/3.4	8.7	22,600	20,600	18,200	16,500
RF4834A	3	3.33	578	480	3	120/3.4	4.4	22,600	20,600	18,200	16,500