



INSTRUCTION MANUAL

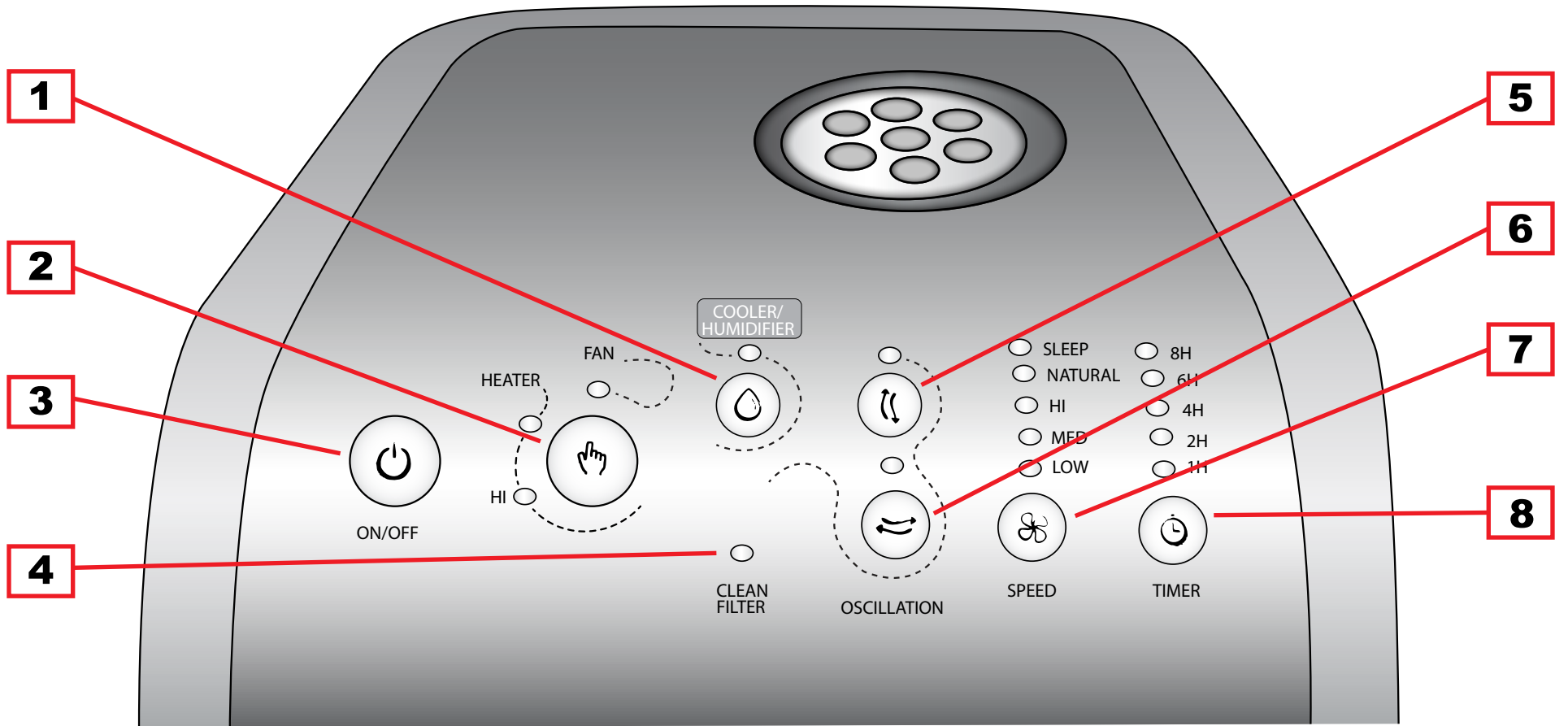
Model Name: PacTrio



Manufactured for: Phoenix Manufacturing Inc.



90%
Less energy consumption



1. COOLER/HUMIDIFIER MODE	Recirculates and filterises the water located at the base to generate cool air.
2. HEAT/COOLER MODE	(FAN Mode) will operate turbine as a fan. (HEATER Mode) will operate as a heater on a low speed setting. (HI Mode) will operate as a heater on a high speed setting. Press buttom multiple times to alternate from Fan to low/high heat modes.
3. ON/OFF MODE	Will turn the entire unit on or off.
4. CLEAN FILTER MODE	Indicator will show a light and make a beeping sound every 100 hours of operation while being used as Cooler/Humidifier. This is to indicate that the honey comb filter located at the rear of the unit needs to be taken out and rinsed, then placed back in its place. Press and hold the COOLER/HUMIDIFIER button down in order to neutralized the beeping sound.
5. VERTICAL LOUVERS	On and off switch for Vertical Ocsilation of louvers to allow up and down cirulation.
6. HORIZONTAL LOUVERS	On and off switch for Horizontal Ocsilation of louvers to allow left to right cirulation.
7. SPEED MODES	(LOW Mode) will operate fan turbine on a low speed. (MED Mode) will operate fan turbine on a medium speed. (HI Mode) will operate fan turbine on a high speed. (Natural Mode) will operate fan turbine by mimicing a natural breeze by increasing and decreasing the speed. (Sleep Mode) will operate fan turbine on a low RPM.
8. TIMER	Allows you to toggle and set a specific time duration for operation (1 - 8 hours of preset use).

physical.

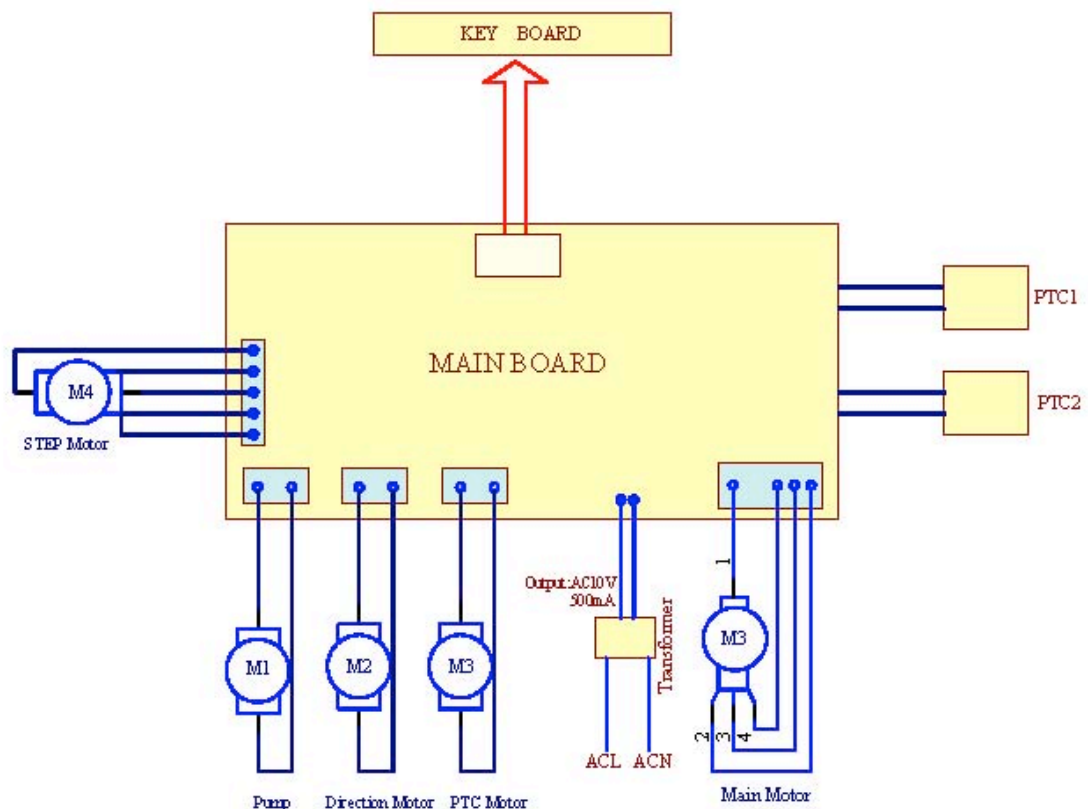
(17) Before make sure the outlet and the power to confirm the voltage is corresponding to requirement.

(18) If move the appliance to a new place check the power voltage first.

(19) WARNING: This heater is not equipped with a device to control the room temperature. Do not use this heater in small rooms when they are occupied by persons not capable of leaving the room on their own, unless constant supervision is provided.

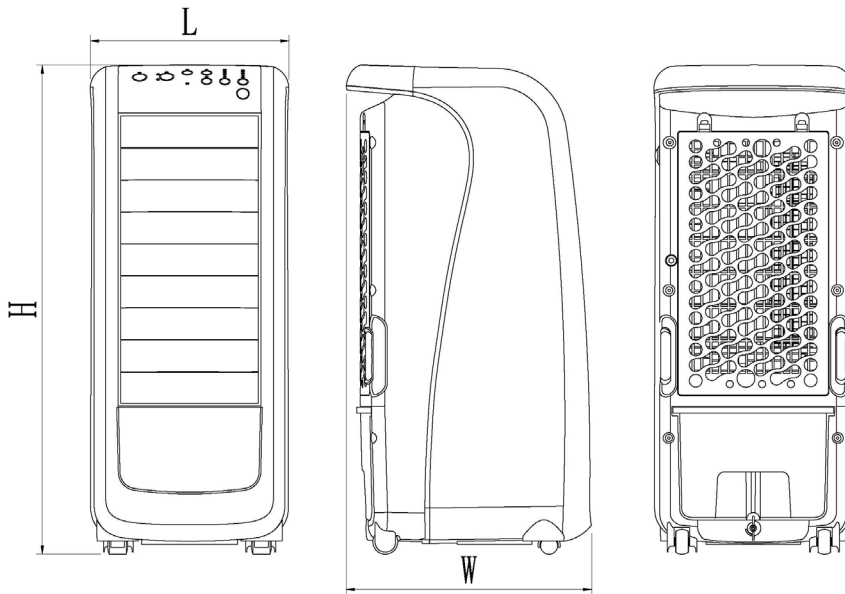
(20) unplug the appliance during filling and cleaning.

6. DIAGRAM



I. : Specification

1 . Cosmetic



II Features

- Three Wind Speeds: High, Medium and Low
- Three Wind Modes: Normal, Natural and Sleep mode
- Cooler/Humidifier function
- Timer function
- With both cooling & Heating function
- Automatic oscillation from left-right and up-down
- Remote Control
- Two universal roller in front, two one-way roller at back
- Fully open drawer-style water tank, easy to clean
- Advanced Cooler Master, higher efficiency of evaporating and cooling air
- Spraying water cycling system , strong hydrophilic, better in cooling air
- With two filters to clean and fresh air
- Double layers to remove the dust and clean air.

III Specifications

- Rated voltage/frequency: 120V/60Hz
- Power: 70W under colling function 800W under Low-heat, 1200W under Hi-heat
- Rotating speed: High - 1350±80r/min Medium - 1150±80r/min Low - 950±80r/min
- Timing: 1-8 hours
- Maximum wind speed ≥15.6 mph
- Air Flow: 153 cfm
- Noise: ≥55dB
- Automatic oscillation angle: Horizontal - 80° Vertical - 70°-135°

- EER:≥9.0 W/W
- Evaporation capacity: .26 gal/hr
- Water tank capacity: 1.6 gal.
- Net weight: 17.6 lb.
- Dimension: 11 in. x 13.6 in. x 27.1 in.

III User Guide

operation requirement

41°F - 109°F RH<95% (77°F)


Control Panel



Remote Control Panel


3. Operating Instruction

- Functional keys

1) ON/OFF  : Plug in the appliance, turn on the main power, the buzzer will sound and enter into the standby mode. Other keys are invalid except the ON/OFF key.

Press again to activate the appliance. It will blow heat when the PTC is behind wind outlet. While the PTC is not at the wind outlet, it blows cool wind.

Press a third time and the appliance shuts off. Exit to stand-by mode. Under heating function, the appliance shuts off 5 seconds later.

2) Speed  : Press this key to set wind speed and wind mode. The corresponding wind speed indicator will light accordingly. Alternate order: low-medium-high-natural. - Sleep mode.

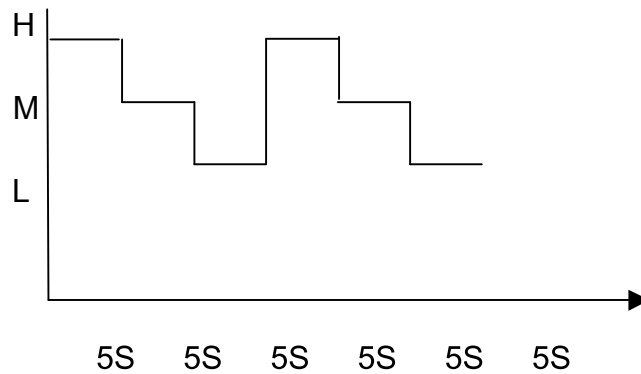
Normal mode

High _____

Medium _____

Low _____

Natural Mode




The horizontal swing works simultaneously with Natural Mode. The vertical louvers start to swing in 10 seconds.

Sleep Mode

30 min high speed --- 30 min medium speed --- 30 min low speed (continual)


The sleep mode works simultaneously with timing function of 8 hours.

3) Timer  : Press this key to set timer. Alternative hours: 1h - 2h - 4h - 6h - 8h - exit timer function - 1h

- The appliance starts to count down after timer function is activated.

The timer function is indicated by 5 LED's, respectively indicates 1hr, 2hr, 4hr, 6hr, 8hr

Timer function needs to be activated after appliance is on.

4) Oscillation (horizontal)  : Press this button to activate the oscillation function. The corresponding LED will turn on. Press again to exit the function. The LED will turn off.


6) Oscillation (Vertical) , It controls the angle of horizontal louvers. The louvers opens to 135 degree when turn on the appliance. Press oscillation key to swing between 70 to 135. Press again to freeze at any angle between 70 to 135. When the appliance is shut off, the horizontal louvers are at 0 degree.

(6) Press this key to open and close the horizontal louver. The initial angle is 135°, use the wind key to select the any angle from 60° to 135°,press it again you will get that angle. Repeat again it will change freely. The louver will shut down when appliance off.

(7) Press this button, the Cool/Humidifier function is on with Beeps, the corresponding LED is on. Press the button again to turn the function off.

Keep water level higher than min. level or it may damage the water pump when use Cooler/Humidifier, and cause noise.

Under Cool/Humidifier, water pump will work 50s. If the water level less than Min. level, the appliance will stop Cool/Humidifier automatically, meanwhile it beeps to alert.

Heating Button : Press this button to switch the function between cooling and heating function. Under Cooling function, press to enter low-heating, press again to enter high-heating. To exit heating function, press the button again.

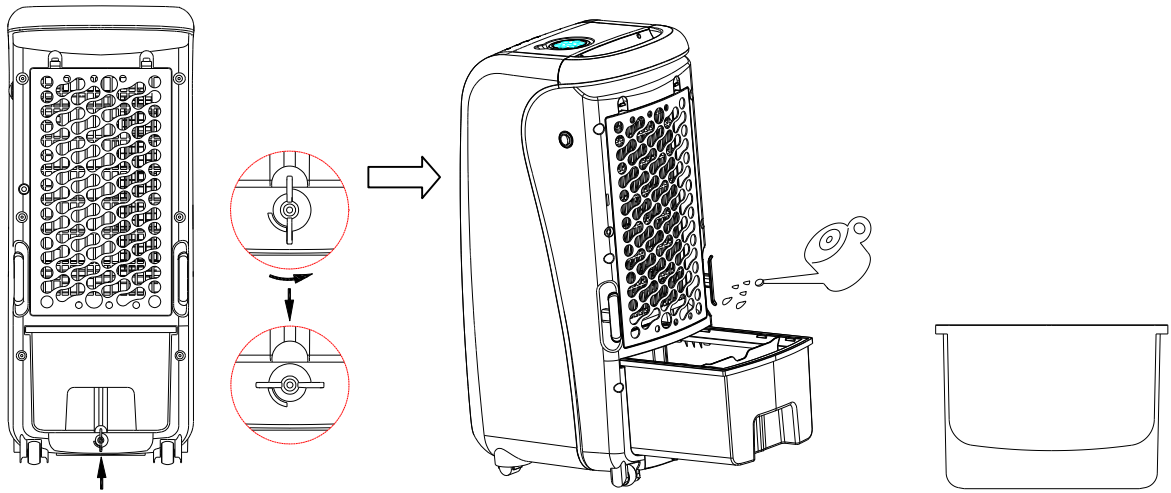
NOTICE :

1. The appliance will stop after 100 hours' working. The filter cleanness indicator LED will turn on. Press Cooler/Humidifier button for 5s to reset the filter cleanness function. The appliance is back to normal status.

2、 The indicator light will dim down for 1 min without any operation. Touch any key the indicator will light up again.

- Add water

Do add water before use Cool/Humidifier function. Turn the water tank knob anticlockwise 90 degree and pull out to add water.



Turn off the water tank know anticlockwise

Take out the water tank to add water

1. Pay attention to the level line when adding water.
2. Keep water level higher than lowest or it may damage the water pump when use Cooler/Humidifier function, and cause noise.
3. When adding water, does not overfeed above “MAX” level.
4. Do use clean water.
5. After adding the water, pull back the drawer and lock the water tank.
6. Kindly Reminder : For the first usage, possibly there would be some scent and discoloring in the water. NO harm to health at all.

- ICE BOX

The ice-box has the particular specialties of cooling preservation, it is able to absorb the heat in the water, which makes the water temperature below the environment temperature (about 8 degree) for hours, the wind from the air cooler will be much cooler.

1. Put the ice-box in refrigerator till completely icing up.
2. Put the freezing ice-box to the water tank, lock the water tank door, after 10 minutes, the temperature of the water tank will be lower than the environment temperature, and the situation can last for 4 hours

3. There are two ice-boxes, ensure continual use.

4. Don't open the ice box or swallow the ice.

● Remote Control

1. Firstly, open the battery cover at the back of remote controller, Install a battery and use it then.

2. There are 7 keys on the remote controller; their functions are the same as the keys on machine control panel.

3. Please aim at the receiver window of remote control, the effective remote controlling distance is within 6 meters.

4. To open the battery cover, you can use coin or equivalent tool to insert into the slot, turn along the "OPEN" direction to open it, rotate in the opposite direction "CLOSE" to fasten the battery cover.



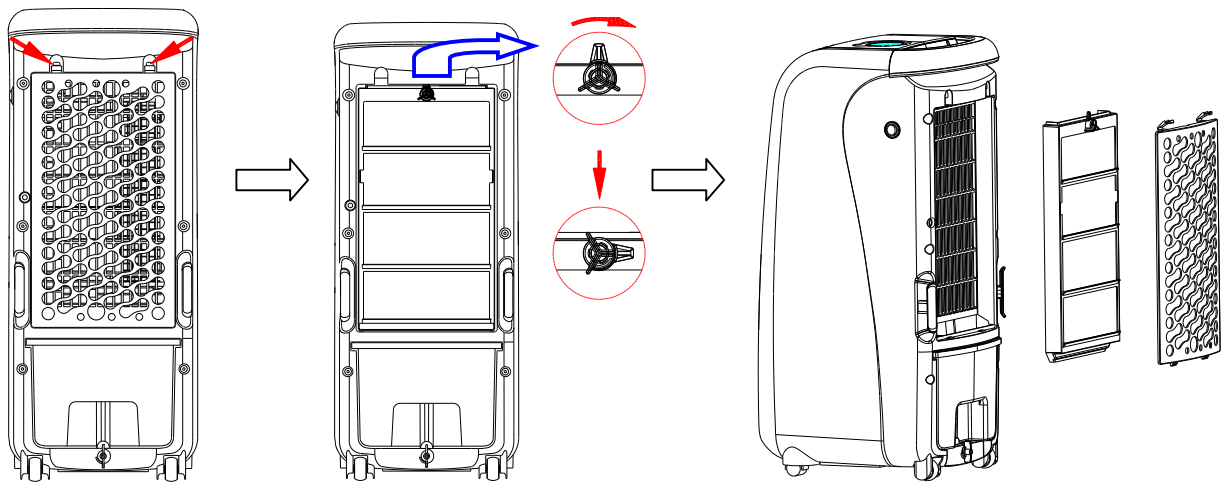
4. Maintenance

- Cleanness of filters

To avoid the overload of dustproof filter, please clean the filter at least once a month.

No chemical medicament is needed.

1. Take off the filters in sequence(as below picture)



Take off the dustproof filter

Turn the knot clockwise 90°

Take off the CoolerMaster

2. Clean the outer filter with abstergent or soft brush.

3. Dip the cooling pad into detergent water and dry it.

- Water tank Cleanness

1. Unplug the unit and pull out the water tank according to instruction. Clean it with washrag or abstergent, and then scour away the slops put the water jam back.

- Cleanness

1. Clean the surface of the unit with damp cloth, never scouring it directly.

2. Do not use corrosive detergent or solvent to clean. Pouring water on the unit is strictly forbidden.

3. To avoid any danger, Unplug the appliance before cleanness.

- Installation after cleanness

1. Reinstall the filters back in sequence.

2. Plug the unit to make sure it works. Otherwise please check the installation of water tank.

- maintenance

1. Unplug the power cord and pack it to prevent from the dust when not using long time.

2. Make sure the cooling pad, filter and water tank dry before package.

3. Keep the appliance in dry and ventilated place.

5. NOTICE

(1) If something wrong with the product, please send it to the repairing station or notify the after- service center, don't disassemble or replace the parts by yourself.

(2) Don't thrust the horizontal louver in case of damage them.

(3) Don't touch the power cord plug with wet hands.

(4) No insert the foreign body such as wooden stick, metal stick into the tuyere.

(5) Don't spray the pesticide and the flammable spray round the product.

(6) Avoid letting the wind outlet facing to the child directly for a long time.

(7) Don't pull the wires heavily when unplug the appliance

(8) Make sure the plug is clean and entirely insert.

(9) If the bad taste or noise occurs, do stop using and unplug.

(11) In case of power cord damage, please send it to after-service center or some technical person to replace.

(11) Keep the power cord zero loads from outer things.

(12) The water lever should not exceed the highest line,ensure the water level is higher than the lowest required when use cooler or humidifier.

(13) After adding water into the unit, do not lean or crash to keep water from overflowing when placing or moving.

(14) If machine fallen down with water in it, plug should be pulled off immediately. Machine can be switched on after 24 hours' drying. You may damage the machine if you do not follow this instruction.

(15)When not using the appliance for a long time, unplug the unit.

(18) This appliance is not intended for use by persons (including children) with reduced

KENMORE ONE YEAR LIMITED WARRANTY

If this product fails due to a defect in material or workmanship within two years from the date of purchase, return it with proof of purchase to any Sears store or other Kenmore outlet in the United States for free replacement.

This warranty is void if this product is ever used for other than private household purposes.

This warranty gives you specific legal rights, and you may also have other rights which vary from state to state.

**Sears Brands Management Corporation
Hoffman Estates, IL 60179**